



Spare Parts Catalogue

Contents

DS4 Electronics.....	3
DS300S Electronics	4
Roller Drive Assemblies	7
Drive Roller Assemblies	7
Idle Roller Assemblies.....	8
Timing Belts & Pulley	9
Transport Belts.....	10
Motors	11
Loadcells	12
Digital Loadcells	12
Analogue Loadcells.....	12
Reject Mechanism Spares	13
Standard Pneumatics	13
Airblast Reject	13
Pusher Reject.....	14
Bat Off Reject.....	14
Photocells & reflectors.....	15
Solenoid Locks.....	15

DS4 Electronics

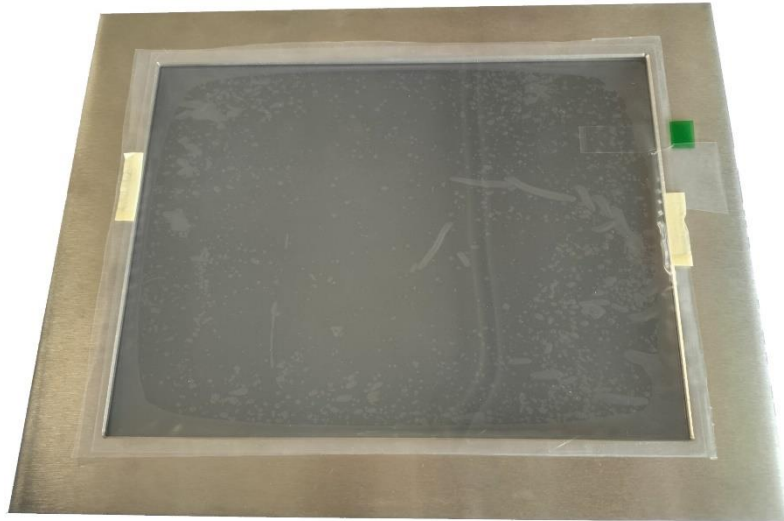
When requesting prices always provide the serial no. of the machine to confirm the correction selection of components



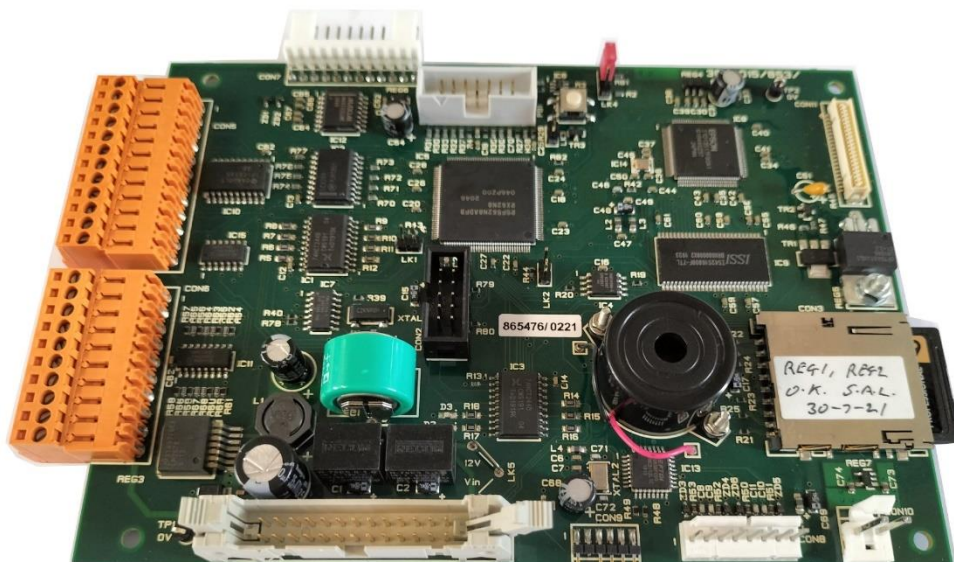
Description	Code
15.6" HD Automation Panel	060020/58/001
15.6" HD Automation Panel (2023 onwards)	060020/58/024

DS300S Electronics

When requesting prices always provide the serial no. of the machine to confirm the correction selection of components. Most part no's can be identified from the part ref. marked on the pcbs.



Description	Code
DS300S TFT Assembly	301E.015/544/02



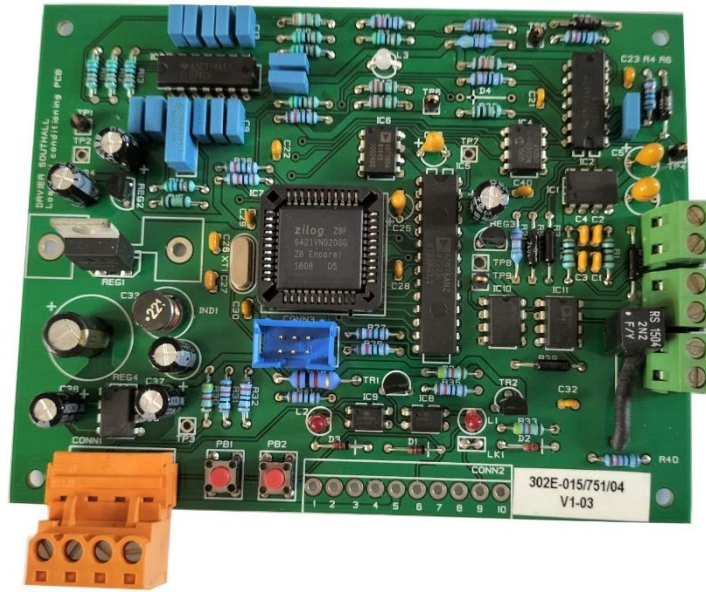
Description	Code
DS300S Main PCB Assembly	302E.015/853/06



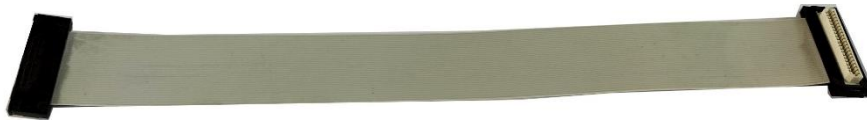
Description	Code
I/O & Motor Control PCB Assembly (Crouzet Motors)	301E.015/984/06
I/O & Motor Control PCB Assembly (Dunker Motors)	301E.015/984/16



Description	Code
Network Interface PCB	302E.016/345/06



Description	Code
Loadcell Conditioning PCB (Standard)	301E.015/751/04T
Loadcell Conditioning PCB (Stiff Filter)	301E.015/751/05T
Loadcell Conditioning PCB (30Kg Cap, 5kg Range)	301E.015/751/06T
Loadcell Conditioning PCB (20Kg Cap, 3kg Range)	301E.015/751/07T
Loadcell Conditioning PCB (20Kg Cap, 5kg Range)	301E.015/751/08T



Description	Code
TFT Display Lead	303E.015/577/01

Roller Drive Assemblies

Drive Roller Assemblies



Standard Conveyor	
Description	Code
Drive Roller Assembly (150mm Wide Belt)	303B.013/778/05
Drive Roller Assembly (200mm Wide Belt)	303B.013/778/09
Drive Roller Assembly (250mm Wide Belt)	303B.013/778/11
Drive Roller Assembly (300mm Wide Belt)	303B.013/778/07
Drive Roller Assembly (350mm Wide Belt)	303B.013/778/24
Drive Roller Assembly (400mm Wide Belt)	303B.013/778/29

Weigh Conveyor (Balanced)	
Description	Code
Drive Roller Assembly (150mm Wide Belt)	303B.013/778/04
Drive Roller Assembly (200mm Wide Belt)	303B.013/778/08
Drive Roller Assembly (250mm Wide Belt)	303B.013/778/10
Drive Roller Assembly (300mm Wide Belt)	303B.013/778/06
Drive Roller Assembly (350mm Wide Belt)	303B.013/778/25
Drive Roller Assembly (400mm Wide Belt)	303B.013/778/30

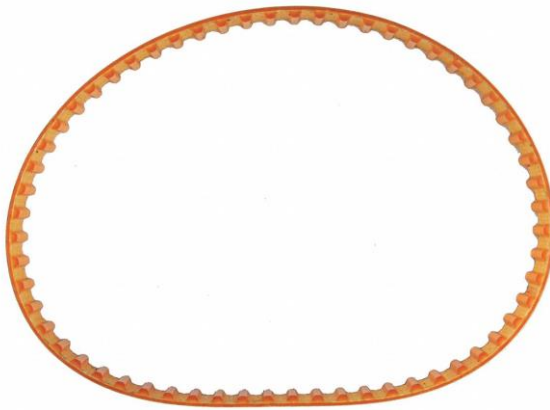
Idle Roller Assemblies



Standard Conveyor	
Description	Code
Idle Roller Assembly (150mm Wide Belt)	303B.014/263/14
Idle Roller Assembly (200mm Wide Belt)	303B.014/263/16
Idle Roller Assembly (250mm Wide Belt)	303B.014/263/21
Idle Roller Assembly (300mm Wide Belt)	303B.014/263/23
Idle Roller Assembly (350mm Wide Belt)	303B.014/263/30
Idle Roller Assembly (400mm Wide Belt)	303B.014/263/35

Weigh Conveyor (Balanced)	
Description	Code
Idle Roller Assembly (150mm Wide Belt)	303B.014/263/17
Idle Roller Assembly (200mm Wide Belt)	303B.014/263/19
Idle Roller Assembly (250mm Wide Belt)	303B.014/263/20
Idle Roller Assembly (300mm Wide Belt)	303B.014/263/22
Idle Roller Assembly (350mm Wide Belt)	303B.014/263/29
Idle Roller Assembly (400mm Wide Belt)	303B.014/263/34

Timing Belts & Pulley



Standard Conveyor	
Description	Code
Timing Belt 100XL037 (High Speed Conveyor)	060026/06/34
Timing Belt 110XL037 (Metering Conveyor)	060026/06/31
Timing Belt 120XL037 (Standard Conveyor)	060026/06/35
Timing Belt 150XL037 (3 Phase Motor Drive)	060026/06/45

For Crouzet Motor Type	
Description	Code
14TXL037 Timing Pulley (High Speed Conveyor)	302C.013/199/29
20TXL037 Timing Pulley (Metering Conveyor)	302C.013/199/21
32TXL037 Timing Pulley (Standard Conveyor)	302C.013/199/28

For Dunkermotoren Motor Type	
Description	Code
14TXL037 Timing Pulley (High Speed Conveyor)	302C.013/199/36
20TXL037 Timing Pulley (Metering Conveyor)	302C.013/199/34
32TXL037 Timing Pulley (Standard Conveyor)	302C.013/199/35

Transport Belts



All transport belt part numbers start 060026/11/***. The tables below denote the last three digits of the part no.

i.e. A conveyor belt for a conveyor 500mm Long x 250mm wide would be 060026/11/

Conveyor Belt Reference Finder		Conveyor Length				
		300	400	500	600	700
Conveyor Belt Width	150	161	170	159	275	265
	200	362	172	269	276	267
	250	305	158	160	251	367
	300	N/A	175	180	280	312
	350	N/A	348	181	296	313
	400	N/A	260	262	345	373

Conveyor Belt Reference Finder		Conveyor Length				
		750	1000	1200	1400	1500
Conveyor Belt Width	150	363	364	365	366	250
	200	285	277	286	369	359
	250	368	223	300	278	249
	300	328	360	263	370	309
	350	371	287	288	372	375
	400	374	314	344	338	346

If your conveyor details are not in the above list, contact the office on sales@driversouthall.co.uk with the serial no. of the machine or consult your customised spare parts list.

Motors



For DS300S & DS4 Model Machines	
Description	Code
Dunkermotoren Motor (With Gearbox)	060020/03/204



For DS300S Model Machines	
Description	Code
Crouzet Motor (With Gearbox)	060020/03/187
Crouzet Motor (Without Gearbox)(High Speed)	060020/03/190

Loadcells

Digital Loadcells



For DS4 Model Machines	
Description	Code
Digital Loadcell Assembly (20kg Capacity)	060020/49/073

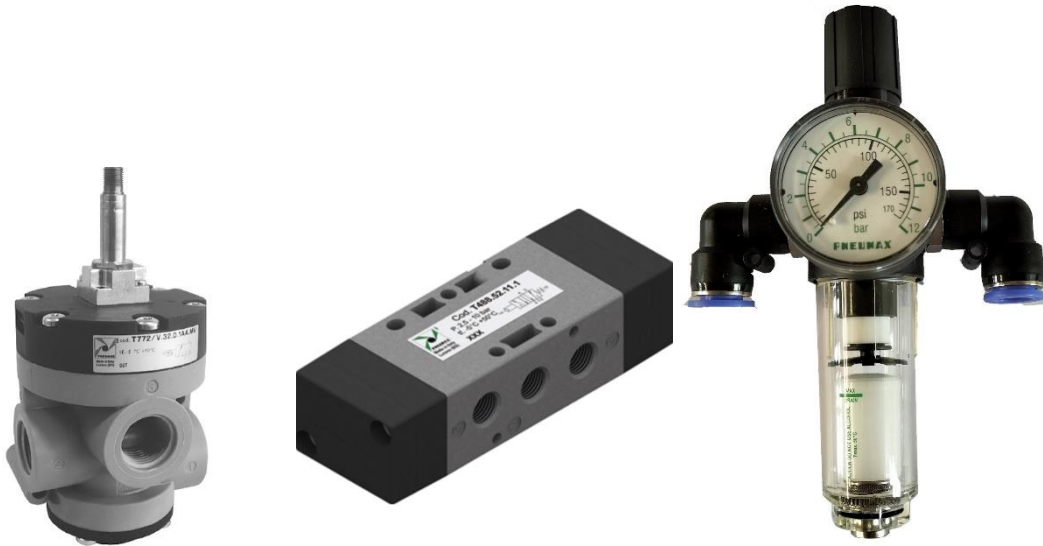
Analogue Loadcells



For DS300S Model Machines	
Description	Code
PW18C3 Loadcell	060020/49/072
9010 Loadcell Assembly (No longer available) Speak with Office about conversion kit	060020/49/046

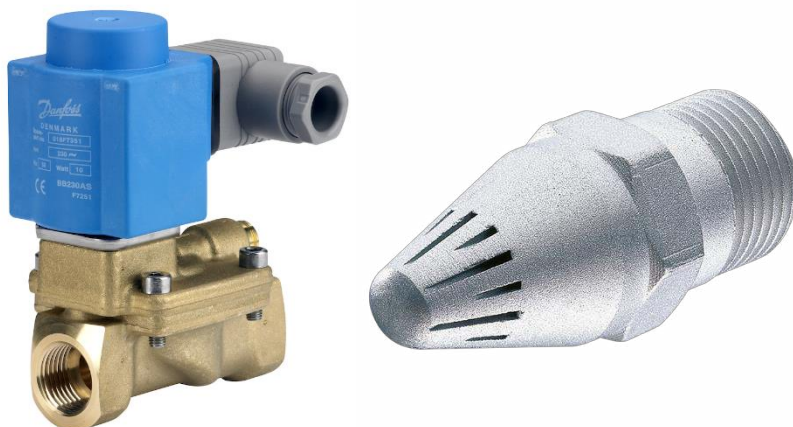
Reject Mechanism Spares

Standard Pneumatics



	Description	Code
Dump Valve	(3/2 Spring/Sol , NC, 1/2" BSP)	060025/01/851
Test Valve	(3/2 Spring/Sol, NO, 1/2" BSP)	060025/01/
Filter Regulator	(1/4" BSP Port, 20um filter)	060025/03/159
Pressure Gauge	(2 – 8 Bar)	060025/03/111
Reject Valve	(5/2 Spring/Sol, NC, 1/8" BSP)	060025/01/052

Airblast Reject



	Description	Code
Airblast Solenoid Valve		060025/03/122
Airblast Solenoid Coil		060025/03/123
Air Nozzle		060025/04/014

Pusher Reject



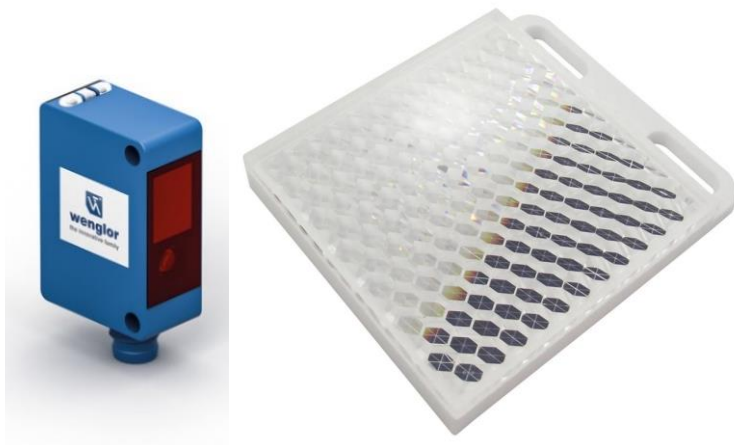
Non Rotating Cylinder Details	
Description	Code
150mm Stroke Cylinder	060025/03/086
200mm Stroke Cylinder	060025/03/085
250mm Stroke Cylinder	060025/03/105
300mm Stroke Cylinder	060025/03/
350mm Stroke Cylinder	060025/03/118

Bat Off Reject



Description	Code
25mm Bore x 100mm Stroke Cylinder	060025/03/081
Clevis End	060025/03/073
Rear Eye Mounting	060025/03/074

Photocells & reflectors



Description	Code
Wenglor NPN Photocell	060020/36/142
Standard Reflector	060020/36/143
Wenglor PNP Photocell	060020/36/160

Solenoid Locks



Description	Code
Allan Bradley Solenoid Lock	060020/16/318